

SO-OH strange Part 2

INTRODUCTION

So much has occurred, and continues to occur, that it has been a nigh impossible task to keep this CD-ROM continually updated, also when does one actually stop?

In order to “finalise” this work in a compact and accessible form, I have decided to offer a complete overview of events since the original SO-OH strange CD was published in January 2003.

In order to do this I have simply given a brief on each major related event with a number of links in chronological order up to July 2003. However, I also include in a separate folder for your pleasure and delight! a gallery of some amazing satellite images right up to the “completion” of this work (September 2003)

However, as you appreciate this type of work is an on-going task, and I thank all those who work hard to maintain on-going public awareness for posterity, and hopefully to a fuller understanding to all.

All I can say now is – BE AMAZED – BE ENLIGHTENED AND **ENJOY**.

Howard Middleton-Jones (September 2003)

ambilac@canoemail.com

www.ambilac.com

<http://ambilac-uk.tripod.com>

NOTE:

Quotes have been indented and have been included “as is” with no editing...and that includes spelling and grammar!

Comet NEAT enters

<http://www.cyberspaceorbit.com/indexback67.html>

Feb 2003-06-27

Were there tampered images?

See <http://www.cyberspaceorbit.com/sohoslideshow.gif> care of cyberspace orbit

What NASA had to say

http://soho.nascom.nasa.gov/hotshots/2003_02_12/

The eye of Horus

See <http://www.exopolitics.org/Why-Neat.htm>

The 'Eye of Horus' - A Celestial Warning Against War in Iraq?

Quotes..

The most cited explanation for NASA faking the passage of comet NEAT is that the comet interacted with the sun in a way that changed the comet's projected orbit and dispersed its tail of cometary debris

If the proposed 'Eye of Horus' was a sign from a non-human intelligence, then the significance of comet NEAT would have been much greater than the official version given by NASA. More troubling for the Bush administration, the symbolism of the 'Eye of Horus' that appeared in the SOHO images, combined with what actually happened between comet NEAT and the sun, could have become a powerful focus of international attention as a 'celestial sign' to tread carefully on the path of war

Michael E. Salla, PhD (March 9, 2003)

March:

Mercury weirdness and X class flares

<http://www.cyberspaceorbit.com/indexback71.html>

US may use E-bomb in Iraq

http://www.usatoday.com/tech/news/techinnovations/2003-03-19-ebomb_x.htm

Sun cruiser and mercury

http://sohowww.nascom.nasa.gov/data/realtime/javagif/gifs_small/20030317_1842_c3.gif

March 3rd – seismic activity – planet rocks

SUMMARY OF WHAT HAPPENED TODAY 03.03.03 11pm MST /
6:00 GMT (Universal Time) 03/04/03

Okay I've just studied the seismic maps from the United States Geological Service. If you look at about the fourth or fifth line from the top of each of these seismographs from around the entire planet. You'll see something in common. They virtually all recorded a seismic event at 6:00-7:00 GMT (Universal Time)

Conclusion: Whatever this event was the entire planet shook at some level as it was recorded everywhere. For places like the Wake Island, Bilibino Russia, Kenya and especially the South Anarctic readings from multiple locations on the continent. For some odd reason the effects seemed to linger on for hours on Wake Island, Kenya and the Antarctic Continent. Strange harmonics were especially evident at the Scott Base, Antarctica location.

I'm not sure what event could make all the seismographs on the entire planet go off at the same time like that, but I'll leave you on that note. I'd copy and paste that page as in about four hours we'll lose the 6:00 GMT (Universal Time).

MOST IMPORTANT LINK TO USGS WORLD SEISMIC READINGS:
http://aslwww.cr.usgs.gov/Seismic_Data/heli2.shtml

Mercury weirdness march 17

The Comet came in close to the inner planets ecliptic or the plane around which they orbit... possibly dumping a bunch of debris. The closest V1 came along side was to Mercury. So did it leave packages, one which was captured by Mercury? And is there other debris out there that earth will swing into later, say in July. Mercury has a ghost when seen on the what is called the "differences" or dif image as well as a Mercury-related SunCruiser, and more...

BUT it looks like there is actually something BEHIND Mercury... (It should be entirely black instead of having that white center in the 'shadow' pic -according to nasa's explanation..and it continues to happen in every single pic...photo anomaly? hmmm....)and when it first appeared, these pics STOPPED for quite a while. (while they figured out how to explain it?) Also, remember the way the Sun lashed out at Comet Neat? Could it be lashing out again at something (another comet? [piece of the comet--Kent]) hiding in Mercury's shadow? Hey, nothing is too weird to consider in these times

SOHO image at

http://sohowww.nascom.nasa.gov/data/realtime/javaqif/qifs/20030318_1254_c2.gif

Overview of all events at

<http://www.cyberspaceorbit.com/indexback67.html>

meteor that exploded over Chicago on March 27, 2003

Image gallery of that event here -

http://abclocal.go.com/wls/features/032703_images_meters1/032703_meteor1.html

PARK FOREST METEORITES

I.M.B. President, Steve Arnold, is currently in the Chicago area, on the trail of meteorites that fell on the night of March 27, 2003 in and around the towns of Park Forest and Steger

See <http://www.meteoritebroker.com/parkforest.htm>

While on same day, this piece of news from BBC

Is the Earth preparing to flip?

It is not just the plot for a far-fetched science-fiction disaster movie.

Something unexplained really is happening to the Earth's magnetic field.

Link to <http://news.bbc.co.uk/2/hi/science/nature/2889127.stm>

Animation of "torpedo" on C2 on March 30th

<http://www.cyberspaceorbit.com/32103c2tr.gif>

Meanwhile Sun fuels debate on questionable global warming at BBC sci tech news

<http://news.bbc.co.uk/2/hi/science/nature/2925155.stm>

A US scientist has cast doubt on the controversial idea that the Sun has been the main contributor to climate change over the past 20 years.

April 8th 2003

EIT image at

http://sohowww.nascom.nasa.gov/data/realtime/javagif/gifs_small/20030409_0700_eit_171.gif

Also – visitor at 3 o'clock

http://sohowww.nascom.nasa.gov/data/realtime/javagif/gifs/20030410_0026_c2.gif

See

http://sohowww.nascom.nasa.gov/data/realtime/javagif/gifs_small/20030413_1418_c3.gif

And

http://sohowww.nascom.nasa.gov/data/realtime/javagif/gifs_small/20030413_1450_c2.gif

There seemed to be a bright flare lower left that was then shadowed by another flare (meaning the forward flare may be headed our way ... there seemed to also be some unusual bending going on but am not sure. if that was real or just caused by the forward flare blocking the brighter flare behind it ???) / this occurred just as the C2 went off line but am not sure if this has anything to do with the latest blockage / none of the still pics have been updated either past those time stamps / if this is coming should be here in the next day or so / also note that some major storm activity is showing in the central hurricane belt under the westward flowing ionospheric electron belt ... could we be in for an out of season set of hurricanes and NASA and NOAA are blocking the feeds since this would really prove my weather theory correct just as they blocked any announcement of comet NEAT (along with tons of other selectively blocked data) ... stay tuned /--jim mcc

EIT image -

http://sohowww.nascom.nasa.gov/data/realtime/javagif/gifs_small/20030411_0119_eit_304.gif

Subj: [Elfrad-Group] Mag disturbance

High intensity magnetic spike began at 2235 UT with peak at 2242 UT. Disturbance still continuing at 2330. Charlie

<http://www.elfrad.com/>

April 14th

Freak weather wreaks havoc in China, destroying thousands of homes
<http://www.terradaily.com/2003/030414083852.q93386e3.html>

Freak weather, including tornadoes and giant hailstones, has wreaked havoc in China, injuring more than 100 and flattening thousands of homes, schools and factories, state press and local officials said Monday.

Hailstones the size of eggs crashed into eastern Zhejiang province Saturday afternoon, destroying 18,000 homes and injuring more than 100 people.

April 17th – strange object observed on C3

http://sohowww.nascom.nasa.gov/data/realtime/javagif/gifs/20030417_0242_c3.gif

April 20th...on going debate on fallout of Comet NEAT VI

Observe C3 for April 20

http://www.cyberspaceorbit.com/20030423_0518_c3b.jpg

April 23rd Cruiser returns

http://www.cyberspaceorbit.com/20030423_0518_c3b.jpg

While on April 24th massive coronal hole appears as EIT image shows

M class storms

http://www.sec.noaa.gov/solar_images/gif//200304_region/200304221618hh1p0338.gif

http://sohowww.nascom.nasa.gov/data/realtime/javagif/gifs_small/200304241305_eit_284.gif

Animation

http://science.nasa.gov/spaceweather/images2003/23apr03/cme_c3_big.gif

April 23rd Comment from James Maccanney

APRIL 23, 2003 UPDATE ... I HAD JUST FINISHED DOING THE PASTOR PETERS RADIO SHOW AS GUEST AND WAS CHECKING EMAILS... JUST GOT AN EMAIL FROM A FAITHFUL SOHO VIGILANT OBSERVER ... IT SEEMS SOHO WAS POINTED TO THE SIDE OF THE SUN AND OBSERVING SOME UNIDENTIFIED "DEBRIS" ... STAY TUNED WE ARE INVESTIGATING TO SEE WHAT BACKGROUND STAR FIELD THE CAMERAS WERE LOOKING INTO AND WHERE THE "DEBRIS" FIELD SETS IN RELATION TO THE SUN AND OURSELVES ...RETURN FOR **AN UPDATE** ... jim mccanney (<http://www.jmccanneyscience.com/>)

Alternate German site while SOHO was going down at this period

<http://star.mpae.gwdg.de/>

ALSO

Chikurachki Volcano (Russia); 50.32 N, 155.45 E, summit elevation 1816 m, stratovolcano; Wednesday 23rd April 2003; Chikurachki volcano located in the North Kuriles began erupting on April 18, 2003. According to data from the Aviation Meteorological Center at Yelizovo Airport on April 19, ash plumes rose 2,000 m above the crater of the volcano. The eruption of the volcano continues. According to visual data from Paramushir Island, on April 21, ash plumes rose 500-1,000 m above the crater of the volcano

Mystery of the Sun's Two North Poles

By Tony Phillips

Science.NASA.gov

posted: 08:00 am ET

23 April 2003

Three years ago, something weird happened to the Sun.

Normally, our star, like Earth itself, has a north and a south magnetic pole. But for nearly a month beginning in March 2000, the Sun's south magnetic pole faded, and a north pole emerged to take its place. The Sun had two north poles.

"It sounds impossible, but it's true," says space physicist Pete Riley of Science Applications International Corporation (SAIC) in San Diego. "In fact, it's a fairly normal side-effect of the solar cycle." Every 11 years around solar maximum, the Sun's magnetic field goes haywire as the Sun's underlying magnetic dynamo reorganizes itself. The March 2000 event was simply a part of that upheaval

http://www.space.com/scienceastronomy/sun_poles_030423.html

Orbit comment

Date: 4/27/03 7:45:11 PM Pacific Daylight Time

Hey, Kent- Have a look at the EIT images for today....

Just above the 9:30 o'clock position, there appears a distinct outline, [resembles **an eagle's head** in some views, a pyramid in others]. This image

appears to 'swing into view' as

<http://www.spacew.com/eit/index.html>

http://sohowww.nascom.nasa.gov/data/realtime/javagif/gifs/20030428_0105_eit_284.gif

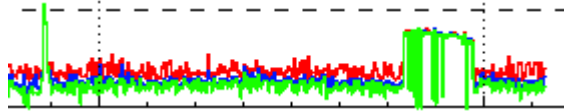
http://sohowww.nascom.nasa.gov/data/realtime/javagif/gifs/20030428_0100_eit_171.gif

http://sohowww.nascom.nasa.gov/data/realtime/javagif/gifs/20030428_0048_eit_195

Watch the Sun Nov 2004 is anticipated by some traditional Elders to be a time of change and happenings [the earth's spin is engineered or conducted by the sun, but the sun will withdraw electrogravitational forces (no, the sun won't go out, quite the opposite) leaving the earth to wobble by momentum only and to align to a new spin--Kent]. The Elder spoke of the increasing need for sunscreen for everyone.

Massive CME -

http://sohowww.nascom.nasa.gov/data/realtime/javagif/gifs/20030425_0750_c2.gif



Weird Unprecedented Proton Spikes

QUAKES OF THE MONTH

[2003/05/01 00:27:04 38.99N 40.46E 10.0 6.4 EASTERN TURKEY](#)

[2003/04/30 08:38:44 43.46N 110.74W 10.0 3.2 WYOMING](#)

[2003/04/30 04:56:22 35.94N 89.89W 24.6 3.7 TENNESSEE](#)

[2003/04/29 10:44:39 7.02S 103.70E 33.0 5.8 SOUTHWEST OF SUMATRA, INDONESIA](#)

[2003/04/29 08:59:36 34.55N 85.50W 5.0 4.5 ALABAMA](#)

[2003/04/28 07:32:26 36.88N 104.94W 5.0 3.7 NEW MEXICO](#)

[2003/04/27 22:57:44 8.15S 71.53W 557.8 6.0 WESTERN BRAZIL](#)

On-going NEAT VI fallout

Bands of debris on C3 -

http://sohowww.nascom.nasa.gov/data/realtime/javagif/gifs/20030420_0742_c3.gif

April 27th Satellite break up over Brazil

See quakes in area for the time period here:

27Apr2003 22:56:45.2 8.1S 71.5W-10 MS=4.6 M*SED WESTERN BRAZIL 1132

27Apr2003 22:56:45.2 8.1S 71.5W-10 mb=6.1 M*SED WESTERN BRAZIL 1032

27Apr2003 22:56:39.3 9.8S 73.6W 33 mb=5.9 M*MAD PERU-BRAZIL BORDER REGION 0738

27Apr2003 22:57:44.9 8.0S 71.6W550 mb=5.6 M*GSR WESTERN BRAZIL 0515

27Apr2003 22:57:43.0 8.1S 71.5W546 M =5.9 M*NEI WESTERN BRAZIL
2341

27Apr2003 22:57:43.7 8.1S 71.5W545 M =5.9 M*NEI WESTERN BRAZIL 2338

<http://www.cyberspaceorbit.com/brazdeb.txt>

MAGSTORM: 4/30/03 Kp was 5+ for 18 hours and aurora seen quite far south

Tomahawk, Wisconsin, USA April 28 see aurora pic April 28th

Photo, Carol Lakomiak at

http://science.nasa.gov/spaceweather/aurora/gallery_01apr03.html

See plots for April 28 pic filed

http://www.sec.noaa.gov/ftpdir/plots/satenv/20030501_satenv.gif

Rada anomalies and all above briefed at

<http://www.cyberspaceorbit.com/indexback77.html>

MAY 1 – Major quake Turkey

2003/05/01 00:27:04 38.99N 40.46E 10.0 6.4 EASTERN TURKEY

Check seismic monitor at Iris

<http://www.iris.edu/seismon/>

MERCURY TRANSIT – MAY

Many weird goings on during this period

Plot see http://www.sec.noaa.gov/ftpdir/plots/kp/20030507_kp.gif

Magno - http://www.sec.noaa.gov/ftpdir/plots/goeshp/20030507_goeshp.gif

Resources for viewing transit

<http://bass2000.obspm.fr/sites/mt2003/mt2003.php?lang=en>

C2 ON MAY 8 -

http://sohowww.nascom.nasa.gov/data/realtime/javagif/gifs_small/20030508_1530_c2.gif

Comments

Date: 5/7/03 1:01:06 PM Pacific Daylight Time

Hey, Kent- the video of Mercury's transit across the EIT images today gives me the distinct impression that the 'planet' is not a round object at all....it appears asymmetric as it tumbles past the Sun!

So, is this Mercury, or is it: a rogue planet/star/spacecraft/a piece of V1 NEAT?!? or something else altogether??

NSDCC PHOTO GALLERY

http://nssdc.gsfc.nasa.gov/photo_gallery/photo-gallery-mercury.html

mercury on C3

Animation at <http://www.cyberspaceorbit.com/mertrans.gif>

May 9 - Fracture in the fold – C3 -

http://sohowww.nascom.nasa.gov/data/realtime/javagif/qifs_small/20030509_1842_c3.gif

While a few days earlier...!!

54 Tornadoes Hit Midwest

Sun, May. 04, 2003 10:11 PM ET

Powerful tornado that stayed on the ground for almost three hours hit the Kansas City area Sunday afternoon, killing at least one person and injuring an unknown number.

Kansas Gov. Kathleen Sebelius declared seven counties disaster areas: Cherokee, Crawford, Labette and Neosho counties in southeast Kansas, and Leavenworth, Miami and Wyandotte counties in northeast Kansas.

<http://www.weather.com/newscenter/topstories/030504mwtornadosunday.html>

If you ever want to check Tornado warnings go to –

<http://iwin.nws.noaa.gov/iwin/us/tornado.html>

Quakes

[2003/05/05 16:32:32 37.75N 78.07W 5.0 3.9 VIRGINIA New Madrid Forum](#)

[2003/05/04 20:08:44 30.62S 178.32W 33.0 6.4 KERMADEC ISLANDS, NEW ZEALAND](#)

[2003/05/05 15:50:08 0.22N 127.20E 122.7 6.4 HALMAHERA, INDONESIA](#)

Comment on increase of tornadoes

TECS - This is scary .

5/11/03 2:58:46 AM Pacific Daylight Time

I think I mentioned a week or so ago that there is more activity then I've ever seen before. I've got a lot a lot of new stuff to post from last week. I guess everybody is starting to take notice. I saw your coverage along with the supercell image. I think you can see now what I was talking about. These are the strongest I've seen. Complete with the tornadoes and heavy hail, 2.5 - 3 inch hail is a daily occurrence. This is going to far. Check out the stats I clipped, we are only a third into the month and look at the total deaths and killer tornadoes not to mention the actual total. This is not right.

<http://www.cyberspaceorbit.com/supercell.htm>

Week's Barrage of Tornadoes Sets a Record

By Kelly Kurt

Associated Press

Sunday, May 11, 2003; Page A11

OKLAHOMA CITY, May 10 -- The barrage of twisters that ripped across the nation's midsection marked the most active week of tornadoes on record, meteorologists said as they sized up a wave of storms that left 44 people dead from Kansas to Georgia and hit three more states today.

The deadly tornadoes began early in the week in Missouri, Kansas and Tennessee, followed by two rounds of twisters in the Oklahoma City area Thursday and Friday. Storms, combined with straight-line wind, lightning and floods, reduced hundreds of homes and businesses to splinters and piles of loose bricks.

<http://www.washingtonpost.com/ac2/wp-dyn?pagename=article&node=&contentId=A40530-2003May10¬Found=true>

Tornado chart

<http://www.samsara2003.com/tornadotallychart-may2003.jpg>

Anatahan Volcano Mariana Islands Central Pacific Ocean

16.35 N, 145.67 E summit elevation 788 m Stratovolcano

Eruptions of Anatahan Volcano

<http://www.volcanolive.com/anatahan.html>

May 14th C2 pic

See 7 o'clock on <http://www.cyberspaceorbit.com/Stswcrss.jpg>

May 16th Moon eclipse

<http://www.spaceweather.com/delights/le0503.html>

I had the unique experience of viewing this event at 36,000 feet over the Atlantic while flying from Canada to UK...as I watched over a period of one hour, the moon was slowly eclipsed and a fantastic clear view it was. I have never seen such a clear black sky with brilliant views of billions of stars.

May 23 - 24th – More solar torpedoes??

<http://www.cyberspaceorbit.com/indexback81.html>

http://sohowww.nascom.nasa.gov/data/realtime/javagif/gifs/20030523_1942_c3.gif

http://sohowww.nascom.nasa.gov/data/realtime/javagif/gifs/20030524_0150_c2.gif

http://sohowww.nascom.nasa.gov/data/realtime/javagif/gifs/20030524_0950_c2.gif

Flux chart for above period

http://www.sec.noaa.gov/ftpdir/plots/xray/20030527_xray.gif

Meanwhile quakes in Japan 6.9

http://wwwneic.cr.usgs.gov/neis/bulletin/neic_ugah.html

Phillipines 6.9 - http://wwwneic.cr.usgs.gov/neis/bulletin/neic_ugbq.html

Indonesia 7.0 - http://wwwneic.cr.usgs.gov/neis/bulletin/neic_ugbd.html

A red dwarf as a neighbour?

Star Search Finds Neighborly Red Dwarf

By SPACE.com Staff

posted: 03:50 pm ET

20 May 2003

Astronomers have stumbled onto a previously unknown star in Earth's stellar neighborhood, a red dwarf that appears to be the third-closest star system to our own.

"Our new stellar neighbor is a pleasant surprise, since we weren't looking for it," Bonnard Teegarden, an astrophysicist with NASA's Goddard Space Flight Center, said in a written statement.

http://space.com/scienceastronomy/astronomy/red_dwarf_030520.html

May 20th EM phenomenon

See chart - <http://www.cyberspaceorbit.com/0520a.gif>

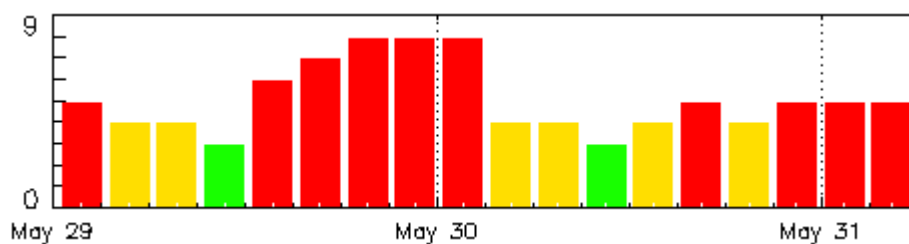
The frequency is .035 hertz with a period of a whopping 28.50 seconds

May 25th Dakota quake -

http://wwwneic.cr.usgs.gov/neis/bulletin/neic_ufal.html

May 29th – severe magnetic storms

KP index



A number of unusual solar anomalies and sightings were seen over this period via global webcams and independent reports – Please go to:

http://www.cyberspaceorbit.com/australian_px.html

While discussion hots up as to the mars event – where mars will be at its nearest to earth in over 60,000 years...as at August 27th

http://www.space.com/spacewatch/mars_preview_021108.html

Meanwhile quakes mount

Indonesia 7.0

http://wwwneic.cr.usgs.gov/neis/bulletin/neic_ugbd.html

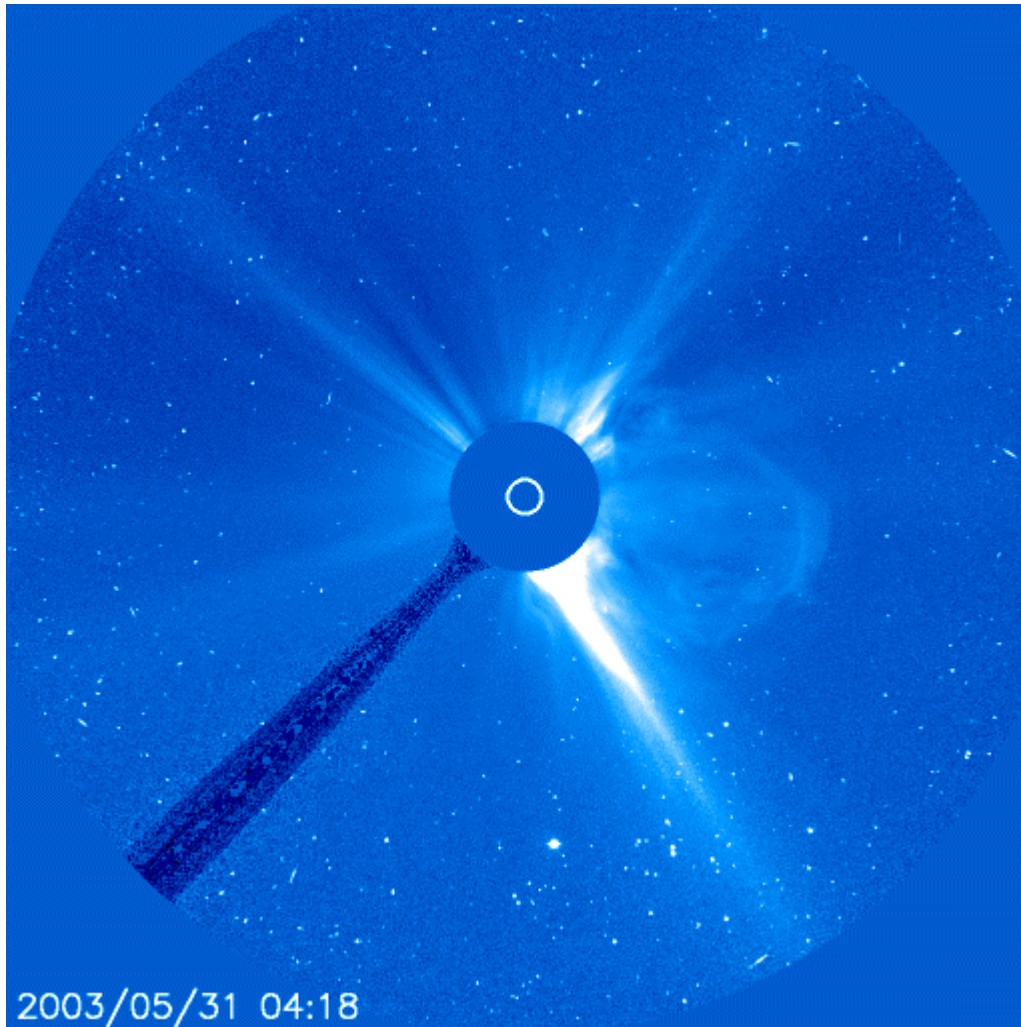
Japan 7.0

http://wwwneic.cr.usgs.gov/neis/bulletin/neic_ugah.html

Northern Algeria 5.8

http://wwwneic.cr.usgs.gov/neis/bulletin/neic_uhbj.html

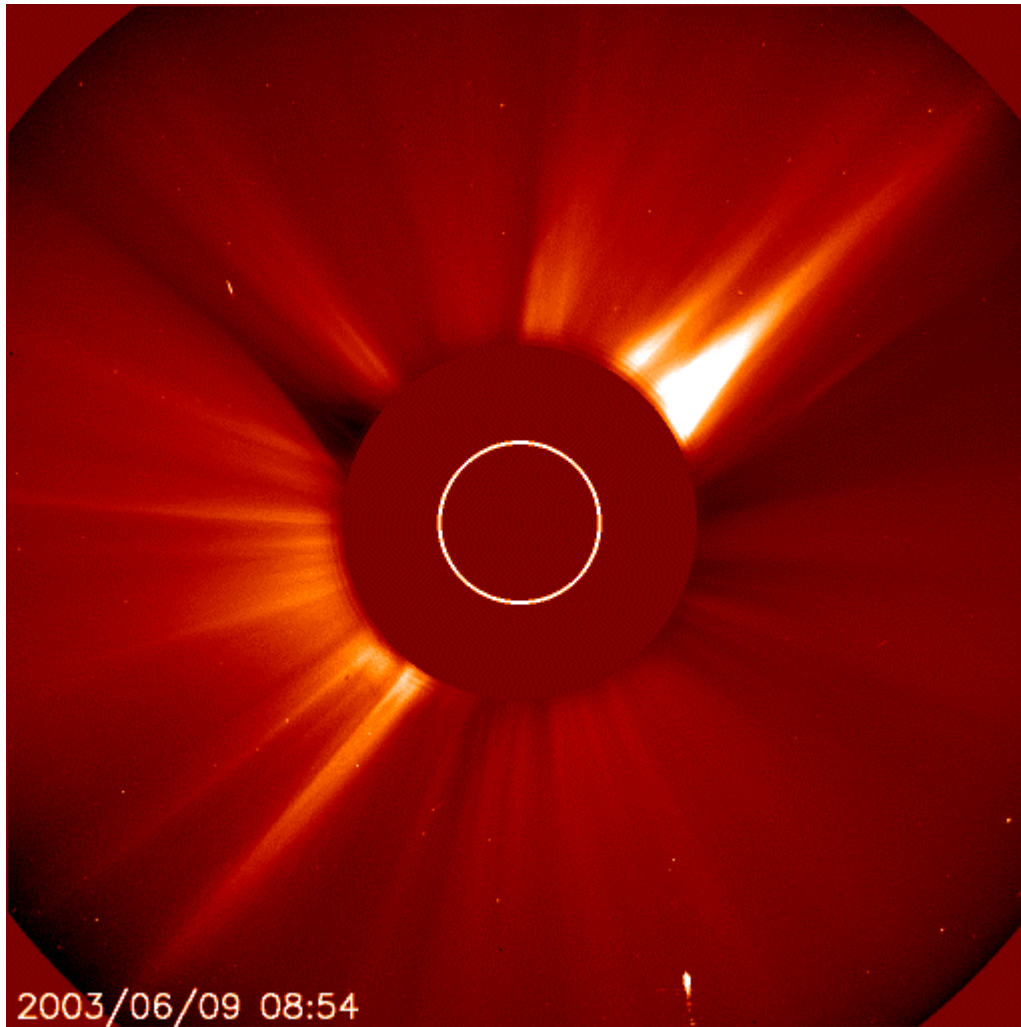
Lasco picture of the week



June 9th –

<http://www.cyberspaceorbit.com/indexback84.html>

NEW STARSEED [Solar Torpedo, although single-frame only]: Date: 6/9/03 8:33:25 AM Pacific



Then see

http://sohowww.nascom.nasa.gov/data/realtime/javagif/gifs/20030610_0530_c2.gif

For animation of above go to

<http://www.cyberspaceorbit.com/indexback84.html>

LOSS OF SOHO

http://www.space.com/scienceastronomy/soho_value_030619.html

Loss of SOHO Could Gut Space Weather Forecasts

By **[Robert Roy Britt](#)**

Senior Science Writer

posted: 04:25 pm ET

19 June 2003

Monday June 23rd 07:54 [SOHO online](#) again! Wednesday June 25th [SOHO down until mid-July](#)

See attached SOHO picture's taken on June 24. One is a SOHO EIT off-point picture of space, and the transmission came though fine, meaning the SOHO spacecraft is working fine at this time and being used off an off-point experiment. The other is a C3 off-point picture of space, and the spacecraft's transmission is working fine

http://www.cyberspaceorbit.com/030624_0954_C3.jpg

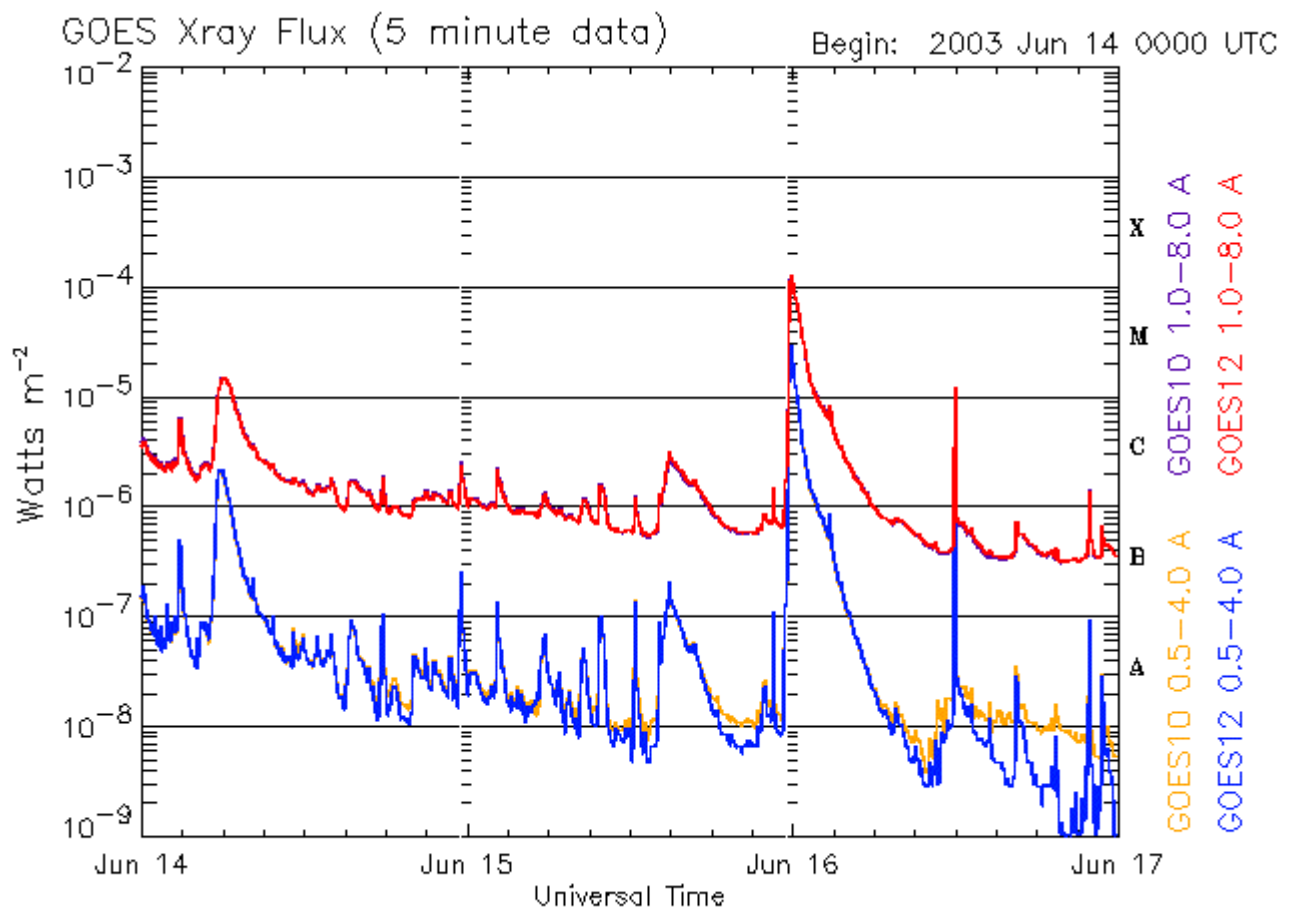
http://www.cyberspaceorbit.com/030624_2220_EIT.jpg

BBC sci tech

The Solar and Heliospheric Observatory (Soho) is experiencing communication problems with the earth

<http://news.bbc.co.uk/2/hi/science/nature/3006110.stm>

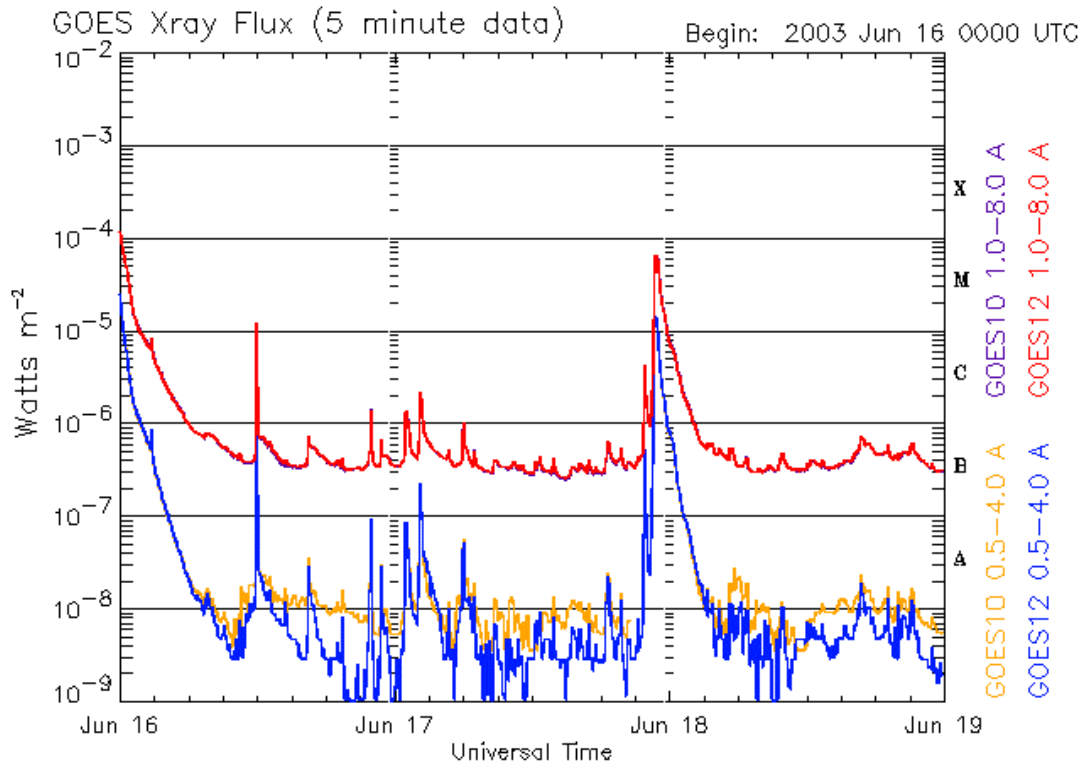
June 16- 17 GOES Xray flux chart for period



Updated 2003 Jun 16 23:56:04 UTC

NOAA/SEC Boulder, CO USA

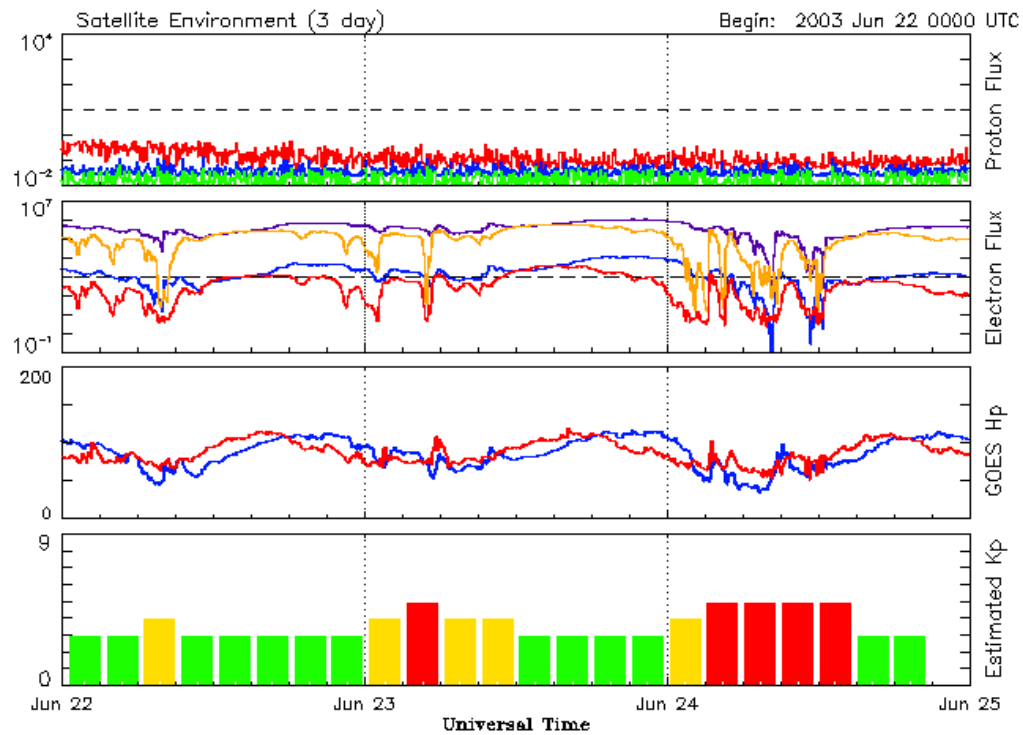
Few days later X class flares



Updated 2003 Jun 18 23:56:06 UTC

NOAA/SEC Boulder, CO USA

While a23/24 magstorm



Updated 2003 Jun 24 23:56:24 UTC

NOAA/SEC Boulder, CO USA

While on rumormill news site:

NASA SCIENTIST WORRIED-NEWS BLACKOUT-NOT A RUMOR

Posted By: Nemesis <[Send E-Mail](#)>
Date: Thursday, 12 June 2003, 7:57

REAL-SCIENCE SCIENTISTS FEAR DIRECT HIT FROM SUN FLARES

<http://www.rumormillnews.com/cgi-bin/forum.cgi?read=32950>

Unusual objects witnessed around the sun during July – many reports – see:

<http://www.cyberspaceorbit.com/indexback83.html>

Reports

Nancelt 6/13/2003 9:00 am EDT

Anyone know what the object showing to the left of the sun is on the 12 June 23:01 shot? It is the Callk 393 nm shot. The side of the sun seems to be slightly nudged inward. Look also to the pic directly above the Callk shot-light seems to be curving upwards as if affected by something. Larger

Shadow on the southern part of Sun Seems to be something between the SOHO camera and the Sun in the 6 o'clock position on the EIT images - about 1/6 up from the bottom. Some of the solar eruptions seem to be in this region or reach to it. I was watching the mpegs to observe the activity and saw the shadow.

While on the coast to coast show internet site we have:

Today (June 17, 2003) at shortly after 1 pm Alaska Time, a co-worker came over and wanted me to come look at the sun out of her window. We are on the 17th floor of one of the tallest buildings in Anchorage, AK. Through the polarized windows, we saw this huge halo around the sun. We went to all the windows in our office space on the west side and looked out to make sure it wasn't something on her window. The halo was present at each window.

<http://www.coasttocoastam.com/gen/page178.html>

**LOOKS LIKE THERE IS AN OBJECT IN ORBIT AROUND THE SUN.
PERIOD LESS THAN A MONTH. LOOK AT SOHO C2/C3 IMAGES
AROUND THE FOLLOWING DATES: 02/22 2342; 03/19 1842;
04/19 0032; 05/16 2042; 06/04? 1142**

<http://www.cyberspaceorbit.com/traangs.gif>

Soho's c3 imagery has captured what appears to be a large planet at the 2:00 position to the Sun. This anomaly was also captured on the webcam imagery out of Santorini, Caldera on more than one occasion at the same 2:00 position.

July 17 info on severe sol storms here

<http://more.abcnews.go.com/sections/tech/Geek/geek000720.html>

CHECK THE FORUM THAT OFFERS YOU CONSTANT UPDATES ON ALL ABOVE RELATED INFO AND MORE.

FULLDISKCLOSURE (With a "K")

<http://www.fulldisklosure.org>

COMING SOON??? WHAT NEXT???